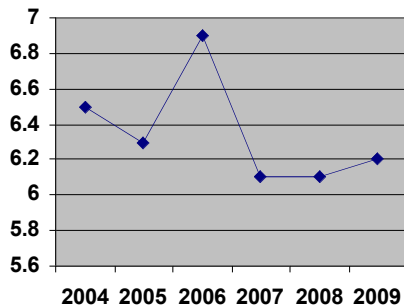


# HEALTH

## Access to Healthcare

### Indicator:

% of Bartlett Hospital patients without health insurance coverage



### Why we care:

Good health is critical to a person's quality of life. One can't work, take care of family, nor contribute to society if health issues get in the way. Unexpected healthcare costs can cause people to lose their homes, jobs and educational opportunities, and they can be devastating to families.

While local citizens and agencies have little direct control over the number of people with or without health insurance, the indicator is a measure of the extent to which Juneau experiences costs from inadequate access to affordable healthcare.

### Trend:

There has been some improvement in these figures but it has been minimal. With the recent passage of a healthcare bill by the federal government, this number is expected to decline.

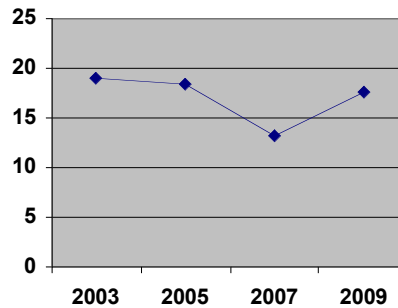
### Data Source:

This data is received directly from Bartlett Regional Hospital; according to their record-keeping practices, these figures reflect the number of patients who pay out-of-pocket (i.e. those who don't have Medicare, Medicaid, or private insurance).

## Suicide

### Indicator:

% of high school students who have seriously considered suicide in the past year



### Why we care:

Suicide is a preventable tragedy that affects loved ones, friends, acquaintances, and others. Indeed, it affects the entire community. Suicide is a tough issue to discuss but it is nonetheless important to talk about and monitor.

Alaska has the highest suicide rate in the nation by a significant margin. Juneau's rate is somewhat lower than the statewide average, but is nevertheless important to track.

### Trend:

The data shows a marginal decrease between 2003 and 2005 followed by a significant decrease between 2005 and 2007. However, there was a significant increase in 2009; the 2009 figure is still slightly lower than 2003.

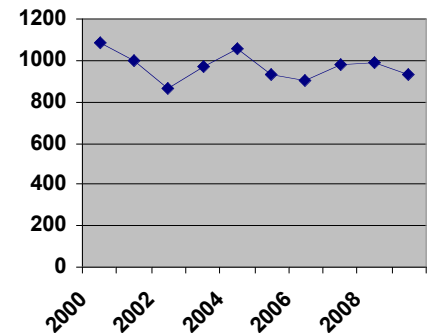
### Data Source:

The Youth Risk Behavior Survey (YRBS), which is administered every 2 years by the school district.

## Substance Abuse

### Indicator:

# of alcohol-related police cases



### Why we care:

Alcohol abuse was identified by the 2005 Compass project as one of Juneau's highest priority issues. By the time alcohol abuse results in a police case, the problem has been magnified; violence, assault, property damage and other crime can be avoided if alcohol abuse is diminished. Alcohol abuse is the root cause of many other preventable social ills as well.

What level of alcohol abuse is Juneau willing to tolerate? Potential costs associated with each police case include enforcement and judiciary costs, costs to the offender and his/her family, costs to the victim(s), etc.

### Trend:

The number of alcohol-related police cases has varied through time with as many as 1085 and as few as 865 per year. It is not yet clear whether the decline since 2008 represents a trend. One thing, however, is certain: the number of alcohol-related police cases in Juneau is consistently too high and needs to diminish.

### Data Source:

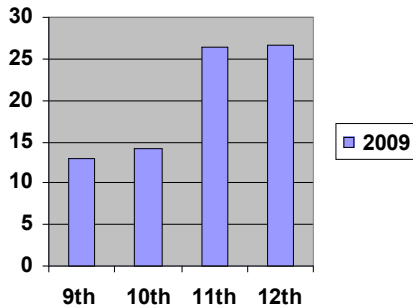
Juneau Police Department

# HEALTH

## Substance Abuse

### Indicator:

% of high school students who have used un-prescribed drugs at least once



### Why we care:

Adolescent drug use evolves, changing from generation to generation. It is ever-present, however, and is always an issue of concern. Drug use often goes hand-in-hand with other risky behavior, not to mention its mental and physical effects.

### Trend:

Un-prescribed drug use increases as students get older. While 13% of district 9<sup>th</sup> graders responded "yes" to this survey question, 26.6% of district 12<sup>th</sup> graders responded likewise. We will continue to track students' responses by grade level and trends will become clear as time passes.

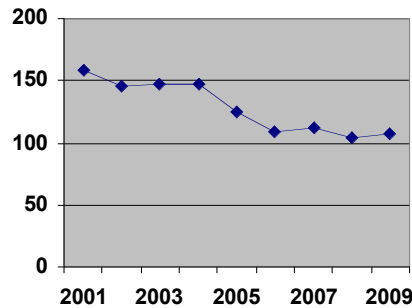
### Data Source:

The Youth Risk Behavior Survey (YRBS) is administered every 2 years by the school district. The survey asked students about un-prescribed drug use for the first time in 2009. We will track responses to this question by grade level so each cohort is recorded twice.

## Senior Care

### Indicator:

# of hospice, home, and end-of-life healthcare clients per 1000 Juneau residents (>54 years)



### Why we care:

Juneau has a uniquely large demographic bubble of aging citizens. The hospice, home, and end-of-life healthcare services in Juneau will need to grow in order to meet increased demand and to ensure the well-being of aged citizens.

As demographic data shows, Juneau's population is aging and healthcare services for the elderly must expand in unison to meet community need. If services aren't expanded, people will leave in search of adequate care.

### Trend:

This data set compares the number of unduplicated clients receiving hospice, home, or end-of-life healthcare with the senior population of Juneau.

Intuition urges us to expect an increase in the number of unduplicated clients per 1000 elderly Juneau residents. However, while the elderly population has grown steadily since 2001, there hasn't been corresponding growth in services.

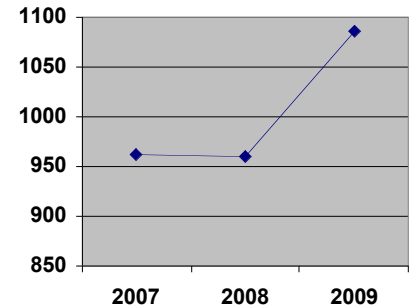
### Date Source:

Unduplicated client counts from various service agencies in Juneau and Department of Labor population figures.

## Mental Disabilities

### Indicator:

# of unduplicated clients per year within the mental health service community



### Why we care:

Mental health is crucial to a person's quality of life. Just as physical health can affect people's lives in various ways, mental health—or lack thereof—can have a large impact. It is therefore an important concern for any community. A healthy community has the capacity to care for its citizens who have special needs.

### Trend:

This data simply shows the number of citizens who actually receive mental health services each year from various service providers throughout the community.

Most service providers in Juneau have actually seen a slight but steady increase in their client base between 2007 and 2009. In fact, only a small number of service providers have seen any significant change in their unduplicated client counts; some have increased and others have decreased. On the whole, however, there has been a clear increase in client numbers within the mental health service community.

Furthermore, some data from 2008 is missing; as a result, the data for 2008 is subject to change.

### Date Source:

Unduplicated client counts from various service agencies in Juneau.

