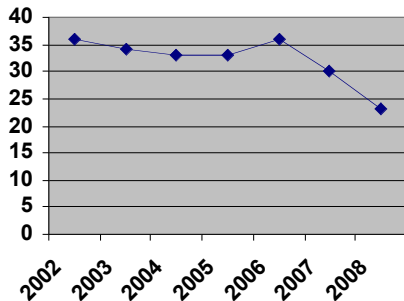


INCOME STABILITY

Access to Employment via Childcare

Indicator:

of licensed childcare slots per 100 children (0-4 years)



Why we care:

According to the Juneau Economic Development Council, it takes 2.1 incomes to support the cost of living in Juneau. This means that most parents are working and their children are in need of childcare. When childcare is available, parents are able to find and keep work more easily.

Trend:

Since 2002, the population of young children in Juneau has remained relatively constant while the number of licensed child care slots has diminished.

There was additional funding and effort in 2006 to promote licensed child care options, leading to a temporary increase. These efforts were not sustainable and the number of licensed childcare slots in Juneau has decreased dramatically. It is likely that many non-licensed childcare slots have opened to meet demand; quality licensed childcare can be essential in raising healthy children who are ready to learn when they start school.

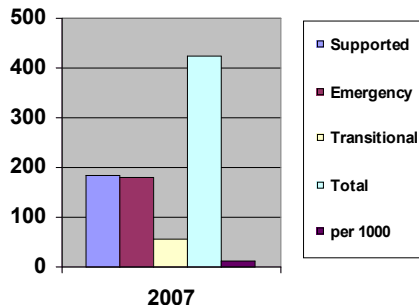
Data Source:

Childcare statistics are gathered by the Juneau Economic Development Council (JEDC) and United Way partner agencies while population data comes from the Department of Labor.

Shelter and Housing

Indicator:

of units of supported housing, emergency shelter and transitional living per 1000 Juneau residents



Why we care:

Homelessness, whether permanent or temporary, is a challenge to health, education, and income stability. It is important to support those in need of housing, no matter the reason for their homelessness or the degree of their need.

Trend:

Data for the indicator is only available for 2007. The number of housing service units per 1000 Juneau residents was 14 in that year. This figure will be compared with future pieces of data and soon a trend will become clear.

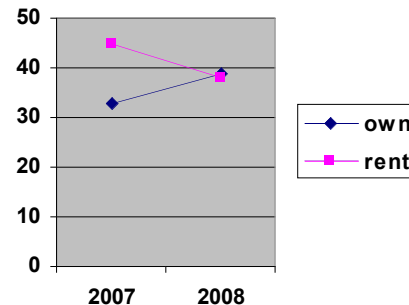
Data Source:

Juneau Economic Development Council (JEDC) and the Juneau Housing Coalition (JHC)

Shelter and Housing

Indicator:

% of homeowners/renters who pay 30% or more of their income for mortgage/housing costs or rent



Why we care:

Affordable housing was identified in the 2005 Compass project as one of Juneau's highest priority issues. When housing costs are too high, people are less able and less likely to save; as a result, their financial stability is crippled. The 2008 CBJ Comprehensive Plan notes, "there is an inadequate supply of housing to provide residents adequate choice in housing size, location and price, resulting in residents paying more than 30% of their income on housing." Juneau residents face both a saturated and expensive housing market; when compared with national housing figures, Juneau's are put into perspective. As an example, in 2007 45% of Juneau renters paid 30% or more of their income on housing costs while the nationwide figure was only 30%. That is a staggering difference.

Trend:

The data for this indicator is only available for 2007 and 2008; once more data is available, trends will become clear. For now, though, it is clear that too many people in Juneau face high housing costs.

Data Source:

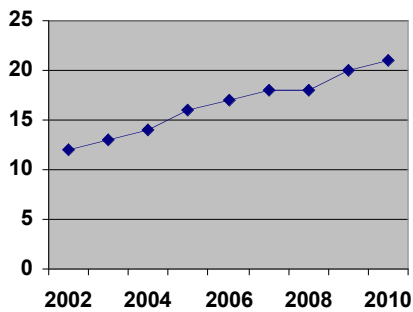
Juneau Economic Development Council (JEDC)

INCOME STABILITY

Poverty

Indicator:

% of school district students who receive free or reduced lunch



Why we care:

Poverty hinders health, education, and income stability. Healthcare can become unattainable and education may become secondary to putting food on the table.

Trend:

Since 2002, there has been an obvious and consistent increase in the % of school district students receiving free or reduced lunch. Some of this is likely from improved efforts on the part of the school district, but the upward trend is still consistent and substantial.

Between 2002 and 2010, the change is drastic: 12% of district students received free or reduced lunch in 2002 and 21% receive free or reduced lunch in 2010. The school district should continue its outreach efforts but it is clear that more of the student body is in need of financial support than before.

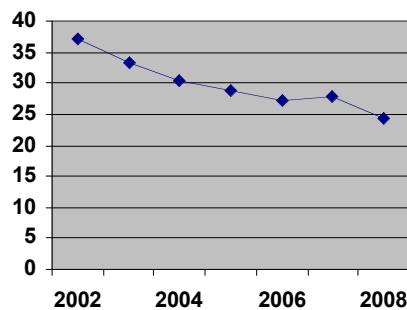
Data Source:

This data is gathered annually, along with other demographic information, by the Juneau School District.

Young Adult Stability

Indicator:

of teen pregnancies per 1000 girls (15-19 years)



Why we care:

Simply put, teen pregnancy makes life more complicated. Teen pregnancy is a significant hurdle for young adults, loved ones, and newborns alike. Bringing a child into the world is a beautiful thing but it can be stressful and complicated when it comes too soon. Recent statistics show that 75% of single mothers live in poverty. Young parents are often forced to change their life trajectory and children of teen mothers are often faced with significant disadvantages in regard to health, education, and income stability.

Trend:

Since 2002, except for a minor increase in 2007, there has been a consistent and significant decline in teen pregnancy. Efforts to maintain this downward trend are important and include education and awareness programs. While the number of teen pregnancies has declined, there is much room for improvement. In 2008, there were 25 pregnancies for every 1000 girls (ages 15-19).

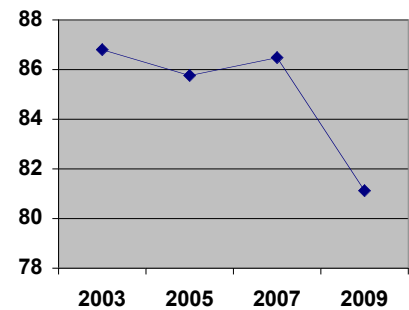
Data Source:

This information is published each year by the Department of Public Health's Vital Statistics office.

Young Adult Stability

Indicator:

% of high school students who say there is at least 1 non-parent from whom they could seek help with an important question



Why we care:

A relationship with non-parental adults is one of 20 Developmental Assets identified nationally and by the Alaska Initiative for Community Engagement as important for youth to succeed. It is also the basis for mentor programs nationwide. Relationships with mentors, coaches, teachers, employers, neighbors, family friends, and others are a necessary link between youth and the broader community. They also provide a key safety net when family stability is threatened by economic, health or other issues.

Trend:

This data set suffered a sharp decline between the 2007 and 2009 Youth Risk Behavior Survey. Certainly, it is great that more than 4 of every 5 district high school students have at least one non-parent from whom they could seek help with an important question. However, there has been a drastic decline recently and it appears that fewer Juneau youth feel connected and comfortable seeking advice from potential mentors.

Data Source:

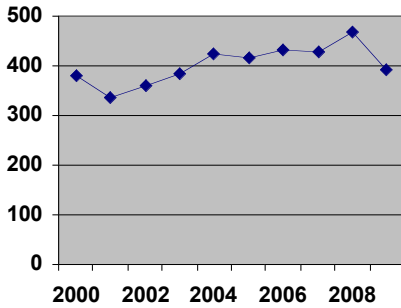
The Youth Risk Behavior Survey (YRBS), which is administered every 2 years by the school district.

INCOME STABILITY

Family Stability

Indicator:

of domestic violence police cases



Why we care:

Governor Sean Parnell's recently proposed 10-year plan to end domestic violence highlighted publicly what social service agencies have always known: domestic violence is one of the most destructive forces in Alaska communities.

Domestic crimes can tear apart families, ruin relationships, cause mental/emotional harm, and make life difficult. The long-lasting effects are devastating to adults and children and are costly to society.

Trend:

Except for significant declines in 2001 and 2009, the number of domestic police cases in Juneau has been increasing consistently since 2000. In 2001 there were 338 such cases and in 2008 there were 467.

In 2009 there was a sharp decline in domestic police cases (down to 394). While this decrease is significant and promising, there were still more cases than any year prior to 2004 (also, this figure is well above the national average).

Data Source:

Juneau Police Department